



AMERICAN CORD & WEBBING

**BERRY COMPLIANT
PLASTIC HARDWARE**
MANUFACTURED IN THE USA





For 100 years, American Cord & Webbing Co., Inc. has been a leading manufacturer of narrow fabrics, injection molded plastic hardware and sewn strap assemblies. We work with you to solve problems; current stock, rapid in-production response, quality without question.

ACW is recognized for its innovation in design and engineering ability for developing

custom products to specification. Our experience and expertise, combined with our commitment to service and quality, is unequalled in the marketplace. ACW is prepared to resolve your last minute problems for your "just in time" solutions.

ACW offers a wide selection of high performance webbing products for consumer and industrial product applications. We offer the most popular fibers including nylon, polypropylene, polyester and aramids. To meet our customers' prompt delivery requirements, we maintain inventory on our most popular colors, widths and styles.

ACW also provides various treatments to webbing and non-elastic cord such as flame retardants, water repellants, anti-

microbials and stiffeners. Other treatments are also available to customize your products.

ACW manufactures a complete line of plastic hardware, including our newest Heat Stabilized Plastic Line that is UL certified to NFPA Standards for Safety.

ACW's in-house assembly facility provides customized fabrication services such as cutting, sewing, applying plastic and metal components and much more.



Certified to
ISO 9001:2015



The leading manufacturer of
Berry Compliant Plastic Hardware



For further information about ACW Accessories,
please contact us at (401) 762-5500 or visit www.acw1.com

CONTENTS

OUR COMPANY	2
SIDE & CENTER RELEASE BUCKLES	4
DOUBLE BAR BUCKLES	7
LOOPS & SINGLE BAR SLIDES	8
D RINGS & HOOKS	10



CORD ATTACHMENTS & ACCESSORIES	12
FLOTATION REFERENCE GUIDE	14
MILITARY APPROVED REFERENCE GUIDE	14
FIRELOCK® REFERENCE GUIDE	15
PRODUCTS INDEX	15

All items can be made in our line of **FIRELOC** heat stabilized plastic designed for high-heat applications. These items have been tested and approved by Underwriters laboratories for use in the United States and Canada and are UL/ULC Certified to NFPA Standards for Safety.

SIDE & CENTER RELEASE BUCKLES

ACW's side release buckles are the industry's standard for both performance and appearance among molded fasteners. All Military approved buckles have ACW IRR **scatter-shield** surface.



MSR Side Release Buckle

Strong side release buckle. All widths are military approved items.

Sizes: $\frac{3}{4}$ " , 1" , 1 $\frac{1}{2}$ " , 2"



MSR Double Adjust Buckle

This double locking feature allows for easy adjustment from both ends of the strap.

Sizes: 1" , 1 $\frac{1}{2}$ " , 2"



MSR Buckle with Slot F/S

Designed to make it simple to perform field repairs without removing sewing. Used with MSR Male.

Sizes: 1" , 1 $\frac{1}{2}$ "



MSR M/Hole Male Buckle with Hole

This male buckle with hole in tab was designed for installation of a cord pull tab. Used with the $\frac{3}{4}$ " MSR Female.

Sizes: $\frac{3}{4}$ "



MSR Field Attachment

Add female to existing webbing in the field without sewing. Use with MSR-1 male buckle.

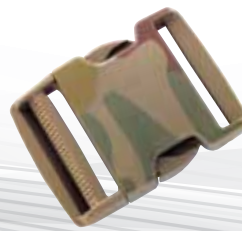
Sizes: 1"



MSR Male Loop M/L

Designed for applications where adjustability is not required. Used with MSR 1 Female.

Sizes: 1"



MSR Camo Buckle

Our MSR buckle in a versatile Camo pattern for use in various combat and hunting environments.

Sizes: $\frac{3}{4}$ " , 1" , 1 $\frac{1}{2}$ " , 2"



T-1 Bullet

This extra strong buckle was originally developed and approved for Type 1 life jackets utilized by the United States Navy Seals. In lab testing, the T-1 Bullet is the strongest side release buckle available in the world.

Sizes: 1"

The leading manufacturer of
Berry Compliant Plastic Hardware



For further information about ACW Accessories,
please contact us at (401) 762-5500 or visit www.acw1.com



BSR Buckle

ACW's BSR buckle allows single handed adjustment and release. A smooth release action makes this buckle a great choice for almost all side release applications. Original industry standard.

Sizes: $\frac{5}{8}$ " , $\frac{3}{4}$ " , 1" , 1 $\frac{1}{2}$ " , 2"



BSR Double Adjust Buckle

Standard side release with double locking feature allows for easy adjustment from both ends of the strap.

Sizes: 1" , 1 $\frac{1}{2}$ " , 2"



LSR Side Release Buckle

Sleek design, low profile and lightweight. Ideal for applications in tight areas utilizing thinner webs.

Sizes: $\frac{3}{4}$ " , 1"



LSR Double Adjust Buckle

This double locking feature allows for easy adjustment from both sides of the strap. Lightweight, low profile.

Sizes: $\frac{3}{4}$ " , 1"



SKR Side Kick Release Buckle-Double Adjust

The SKR allows the user the ability for quick release with wet or gloved hands. The side pinch bars are integrated into the design to provide leverage for easy and rapid release. Closed arm design prevents tangling with webbing.

Sizes: $\frac{5}{8}$ " , $\frac{3}{4}$ " , 1" , 2" ,



CSR Contoured Side Release Buckle

Contoured side release makes for a more comfortable fit on collars, belts, harnesses, backpacks, Paracord bracelets & much more. The CSR has a quick release and no sharp edges to snag on items.

Sizes: $\frac{3}{4}$ " , 1" , 1 $\frac{1}{2}$ " , 2"



CSR Double Adjust Buckle

Contoured side release with double locking feature allowing for easy adjustment from both ends of the strap.

Sizes: 1" , 1 $\frac{1}{2}$ " , 2"



CSR Type V Buckle

ACW's increased strength buckle with less bulk. Meets TYPE V floatation requirements.

Sizes: 1" , 1 $\frac{1}{2}$ "

SIDE & CENTER RELEASE BUCKLES

ACW's side release buckles are the industry's standard for both performance and appearance among molded fasteners. All Military approved buckles have ACW IRR **scatter-shield** surface.



PC Pouch clip (female) with Back Plate
 (3 Posts)
 ACW's design incorporates a 3-post mounting system which allows the female end to lay flush on the fabric. The user can engage and disengage the male end with one hand. Use with the MSR 1" Male.
 Sizes: 1"



MPC Pouch clip (female) with Back Plate
 (4 Posts)
 Designed to incorporate a 4 post mounting system which allows the female end to lay flush on the fabric. The user can engage and disengage the male end with one hand. Use with the MSR 1" Male.
 Sizes: 1"



WB Watch Band
 Push button watch band buckle. The WB can be used with Simple Loops or adjustable ends.
 Sizes: 1/2", 3/4", 1"



GM Quick Release Buckle
 ACW's dependable lift latch quick release buckle has a satisfying engagement click with center release.
 Sizes: 1", 2"

MATERIALS & COLOR OPTIONS

Standard Materials: Acetal, Nylon, High Heat or Fire Retardant grades available.

Products available in established and custom colors

Black, White, Yellow, Red, Wolf Grey, Coyote Brown #498, Tan #499, Foliage Green #504, Camo Green #483



The leading manufacturer of
Berry Compliant Plastic Hardware



For further information about ACW Accessories,
please contact us at (401) 762-5500 or visit www.acw1.com

DOUBLE BAR BUCKLES

The most versatile buckles available; designed to assure smooth and easy tightening without slippage. Each offers the convenience of one-handed release or tightening of webbing.



DB Single Lock Buckle

One piece web adjustment buckle with infinite strap length adjustment. Original industry standard buckle.

Sizes: $\frac{5}{8}$ " , $\frac{3}{4}$ " , 1" ,
1 $\frac{1}{2}$ " , 2"



MDB Single Lock Buckle

Newly designed, this strong compact 3-bar buckle assures high release angle for safety.

Sizes: 1" , 2"



DB Double Lock Buckle

With the Double Lock buckle, the necessity of sewing can be eliminated by using both locking sides with adjustment.

Sizes: $\frac{3}{4}$ " , 1"



HRL Curved High Release Lock Buckle

A comfortable curved buckle designed with the highest release properties for helmet applications without slippage. Includes finger grips along the outer sides for easier use.

Sizes: $\frac{3}{4}$ "



DB Single Lock/Field Repair Buckle

This buckle enables you to replace broken parts in the field without sewing. The slotted double bar buckle is designed to slip on or off webbing when required for quick decisions in the field.

Sizes: 1"



VPR Viper Buckle

A brand new design from ACW. Add an edge with the Viper Buckle. Very sleek look and stronger than the standard Double Bar buckle.

Sizes: 1" , 1 $\frac{1}{2}$ "



HDB Heavy Duty Single Lock Buckle

Industry's strongest double bar buckle. This buckle is designed with a high release angle as well.

Sizes: 1" , 2"

LOOPS & SINGLE BAR SLIDES

ACW's loops are ideal for joining straps or webbing where no adjustment is needed. Our Loops will connect any two free ends of strap and have perfect holding power with no adjustment required. ACW's slides have infinite adjustment to meet your needs.



SB Single Bar Slide

Strong, yet lightweight, standard profile design.

Sizes: $\frac{3}{4}$ " , 1" , 1 $\frac{1}{4}$ " , 1 $\frac{1}{2}$ " , 2" , 3"



LP Simple Loop

These loops hold down the loose ends of your strap or act as a connection point.

Sizes: $\frac{3}{4}$ " , 1" , 1 $\frac{1}{4}$ " , 1 $\frac{1}{2}$ " , 2" , 3"



LPM Medical Loop

Concave design to keep webbing in alignment under load.

Sizes: 1" , 1 $\frac{1}{2}$ " , 2"



SB Low Profile Slide

An attractive low profile design developed to blend into any strap assembly.

Sizes: $\frac{5}{8}$ " , $\frac{3}{4}$ " , 1" , 1 $\frac{1}{2}$ "



RL Reducer Loop

Reducer loops enable connections between two different widths of webbing.

Sizes: 1" - 1 $\frac{1}{2}$ " , 1" - 2" , $\frac{3}{4}$ " - 1 $\frac{1}{2}$ "



SB-T Locking Teeth Slide

This slide was designed with teeth to provide extra bite where you need it.

Sizes: 2"



SS Sternum Strap Buckle

Designed to simplify attachment of sternum strap to other components in your backpack system.

Sizes: 1"



TL Tri-Loop

Use the Tri-Loop with WSB in applications for joining webbing and a hook.

Sizes: $\frac{3}{4}$ " , 1" , 1 $\frac{1}{2}$ "

The leading manufacturer of
Berry Compliant Plastic Hardware



For further information about ACW Accessories,
please contact us at (401) 762-5500 or visit www.acw1.com



SLP Sewable Loop

This simple loop can be sewn directly to fabric. This eliminates the necessity of cutting and sewing an extra web attachment piece.

Sizes: 1", 1 1/2", 1 1/4"



ET End Tab

Used to protect the end piece of webbing or strap, or to cover sharp edges of the webbing for a finished look. Same tear resistant material as our LT Lash Tab.



SB-W Wide Profile Slide

Developed to accommodate thicker webbing with low profile.

Sizes: 1", 1 1/2", 1 1/4", 2"



SS Sternum Strap Adjuster

Field attach design that eliminates the need to remove the stitching.

Sizes: 3/4" - 1"



SLP-LT Sewable Loop (Long Tab)

Sizes: 1", 1 1/2", 2"



SLPM Sewable Loop (Medical)

Sizes: 1", 1 1/2", 2"



SLPM-LT Sewable Loop (Medical Long Tab)

Sizes: 1", 1 1/2", 2"

D-RINGS & HOOKS

Lightweight and non-corrosive, ACW's thermoplastic D-Rings come in a wide selection of styles and sizes. Our hooks are used most often for detachable shoulder, waist and utility straps.



DR D-Ring

This heavier weight DR series lends itself to higher strength applications wherever a stable attachment is required.

Sizes: $\frac{3}{4}$ " , 1" , 1 $\frac{1}{4}$ " , 1 $\frac{1}{2}$ " , 2"



SCC Cart Clip

Attach a strap to a shopping cart or to any other opening.

Sizes: 1"



MDR Military D-Ring

ACW's robust MDR is used in applications requiring MIL-SPEC issued gear. This D-Ring is one of the strongest available.

Sizes: 1 $\frac{1}{2}$ "



SDR Sewable D-Ring

Sewable tab eliminates the necessity of cutting and sewing webbing for attachment.

Sizes: $\frac{3}{4}$ " , 1" , 1 $\frac{1}{2}$ "



D-Ring with Slot

Our D-Ring with guide slot threading keeps webbing in cosmetic alignment.

Sizes: 1"



SPA Center Release Spa Buckle

This newly designed 1" Center Release Spa Lock Buckle is designed for additional ease and security.

Sizes: 1"



O-Ring

Simple economical O-Ring can be used in multiple applications in adjustment of strap lengths or with hooks.

Sizes: $\frac{9}{16}$ " , $\frac{3}{4}$ " , 1"



Talon Hook

Allows a "hook-on" addition of a utility waist or equipment strap to the MOLLE webbing system. Webbing is adjustable and can be threaded from either side of the hook.

Sizes: 1"

The leading manufacturer of
Berry Compliant Plastic Hardware



For further information about ACW Accessories,
please contact us at (401) 762-5500 or visit www.acw1.com

These lightweight yet rugged hooks give superior performance and have high tolerance to extreme weather and treatment. Available in a wide assortment of sizes and combinations.



798 Hook

This hook will accept rope or cording up to 7/16". This is a great hook for outdoor applications or any occasion where a metal hook might scratch or scar.

Sizes: up to 7/16"



CH-25 Hook

Lock in cord length with this versatile design that accommodates numerous cord diameters.

Sizes:
"accommodates
cord sizes up to 1/4"
diameter



SL Swivel Loop

Use the Swivel Loop with the WSB web snap body in your application. This special design allows the high tech loop to swivel where flexibility and pivoting is needed.

Sizes: 3/4", 1", 1 1/2", 2"



WSB Web Snap Body

Our WSB web snap body is used with our SL Swivel Loop, which is interchangeable in four widths. The web snap body swivels and pivots when assembled on the SL swivel loop guide bar.

Sizes: Interchangeable
on 3/4", 1", 1 1/2", 2" SL



WSB Hook and SL Swivel

Designed to allow the high-tech hook to swivel where flexibility and pivoting are required to align load.

Sizes: 3/4", 1", 1 1/2", 2"



CORD ATTACHMENTS & ACCESSORIES

ACW's has a wide selection of cord attachments that allow flexibility of use with cord diameters ranging from 1/16" to 1/4". We also offer a variety of specialty products, each made with the same excellent quality, durability and functionality of our other plastic hardware.



CL Cord Lock

Designed with a plastic spring that is military tested to -60F, this two piece cord loc has excellent holding power for cord up to 1/4" diameter.

Total non-metallic design.

Sizes: Hole diameter up to 1/4"



SD Strap Divider

Designed to ensure perfect alignment of shoulder or other crossing straps.

Sizes: 1 1/4", 1 1/2"



TB Toggle Button

Elegant solution that can replace hook & loop, snaps or hand tied knots.

Sizes: Hole diameters 1/4"



FL Footman Loop (139)

Our footman loops can be screwed to any flat surface to provide attachment for your webbing or strap.

Sizes: 5/16", 1 1/2"



The leading manufacturer of
Berry Compliant Plastic Hardware



For further information about ACW Accessories,
please contact us at (401) 762-5500 or visit www.acw1.com



T-Bar Clasp

Simple, fast injecting design with adjustable web locking device on one side and gripping grooves on the locking bar.

Sizes: 1 1/2"



WL Wheel Lock

The wheel lock is a two piece cord locking device with a self-cinch locking wheel that will not loosen under heavy loads.

Sizes: 1/16", 1/8", 3/16"



K Keeper

Designed to secure a loose end of webbing. This innovative design allows it to be used for a multitude of material thicknesses. Medium gap.

Sizes: 1", 1 1/2", 2"



ZP Zipper Pull

Two piece zipper pull. These can be used to replace missing or broken zipper pulls, on new products or as a replacement with cord.

Sizes: maximum cord size 1/8"





Certified to
ISO 9001:2015



FLOTATION - UL 1191

ACW PATTERN

BSR-Type V-1A
BSR-1A
DB-1B
DB-3/4B
DB-Type V-1A
HDB-1
VPR 1.5 Ladderloc
CSR-3/4
CSR-Type V
CSR-1 1/2
LT-4
HDB-2
T-1 Bullet

UL PRODUCT CODES

2, 2F, 3, 3F, 5H, 5R, 5WV
2, 3, 5R
2, 3, 5R
2, 3, 5R
2, 3, 5R, 5WV
1, 1F, 2, 2F, 3, 3F, 5, 5H, 5WV
2, 2F, 3, 3F, 4H, 5WV, 5H, 5R
2C, 3C
2, 2F, 3, 3F, 5H, 5R, 5WV
2, 2F, 3, 3F, 5H, 5R, 5WV
2, 3, 5R
1, 1F, 2, 2F, 3, 3F, 5, 5H, 5WV
1, 1F, 2, 2C, 2F, 3, 3C, 3F, 4H, 5, 5WV, 5H, 5R, 6

MILITARY - US ARMY APPROVED

DRAWING

2 - 4 - 0101
2 - 6 - 1005
2 - 6 - 1012
2 - 6 - 1015
2 - 6 - 1011
2 - 3 - 567
2 - 6 - 0468
2 - 6 - 102
2 - 6 - 1004
2 - 6 - 1006
2 - 6 - 1016
2 - 6 - 1017
2 - 6 - 1020
2 - 6 - 1008
2 - 6 - 1019
2 - 6 - 1007
2 - 6 - 0798

ACW PATTERN

MSR 1.0(M) + MSR 1.0(F)
MSR 1.0(M) + MSR 1.0 F/S (F) w/Slot
DB 1B
DB 1BS w/Slot
MDB 1
HDB 1
DR 1
MDR 1.5
SB 1
MSR 1.5(M) + MSR 1.5 F/S (F) Slot
MSR 1.5(M) + MSR 1.5 DA(F), DA
SB 1.5
SS 1.0
SS .75 - 1"
MSR 0.75 (M) + MSR 0.75(F)
MSR 1.0(M) + MSR 1.0 DA(F), DA
MSR 2.0(M) + MSR 2.0 DA(F), DA
MSR 1.0(M) + MSR 1.0 FA(F)

ITEM DESCRIPTION

1" Side Release Buckle
1" Side Release Buckle (repair kit)
1" Ladderlock Buckle
1" Ladderlock Buckle (repair kit)
1" Tension Lock Buckle, rucksack
1" Tension Lock Buckle, waistbelt
1" D-Ring
1-1/2" D-Ring, used on Hydration System Carrier
1" Slide Buckle
1-1/2" Replacement Side Release Buckle (repair kit)
1-1/2" Side Release Buckle, Fighting Load Carrier (FLC)
1-1/2" Slide Buckle
1" Sternum Strap Buckle
1" - 3/4" Sternum Strap Adjuster Buckle,
used on Hydration System Carrier
1" Double Adjust Side Release Buckle
2" Double Adjust Side Release Buckle
Quick Attach Surface Mount Female (QASM)

KEY TERMS

M = Male **FA** = Field Attach
F = Female **DA** = Double Adjust
S = Slot **H** = with Hole
L = Loop

The leading manufacturer of Berry Compliant Plastic Hardware



For further information about ACW Accessories,
please contact us at (401) 762-5500 or visit www.acw1.com



Certified to  Standards
for Safety.

- NFPA 1971, Standard on Protective Ensembles for Structural Fire Fighting and Proximity Fire Fighting, **2018 Edition**
- NFPA 1951, Standard on Protective Ensembles for Technical Rescue Incidents, **2013 Edition**
- NFPA 1977, Standard on Protective Clothing and Equipment for Wildland Fire Fighting, **2016 Edition**
- NFPA 2112, Standard on Flame-Resistant Garments for Protection of Industrial Personnel Against Short Duration Thermal Exposures from Fire, **2018 Edition**
- NFPA 1975, Standard on Emergency Services Work Clothing Elements, **2014 Edition**
- NFPA 1999, Standard on Protective Clothing and Ensembles for Emergency Medical Operations, **2018 Edition**
- CAN/CGSB 155.20, Standard on Workwear for Protection Against Hydrocarbon Flash Fire and Optionally Steam and Hot Fluids, **2017 Edition**
- CAN/CGSB 155.22, Standard on Fireline Workwear for Forest Firefighters, **2014 Edition**
- ASTM F 1506, Standard Performance Specification for Flame Resistant and Electric Arc Rated Protective Clothing Worn by Workers Exposed to Flames and Electric Arcs, **2018 Edition**

PRODUCTS INDEX

139 Footman Loop	12	MDR Military D-Ring	10	SDR Sewable D-Ring	10
798 Hook	11	MDB Single Lock Buckle	7	LP Simple Loop	8
BSR Buckle	6	MSR Side Release Buckle	4	RL Reducer Loop	8
BSR Double Adjust Buckle	4	MSR M/H Male with Hole	5	SL Swivel Loop	11
CH-25 Hook	11	MSR F/A Field Attachment	4	SLP Sewable Loop	9
CL Cord Lock	12	MSR M/L Male Simple Loop	4	SS Sternum Strap Buckle	8
CSR Contoured Side Release Buckle	4	MSR F/S Buckle with Slot	4	SS Sternum Strap Adjuster	9
CSR Double Adjust Buckle	5	MSR Double Adjust Buckle	4	SPA Center Release Spa Buckle	10
DB Double Lock Buckle	7	MSR Camo Buckle	5	T-1 Bullet	5
DB Single Lock Buckle	7	O-Ring	10	Talon Hook	10
DB Single Lock, Field Repair Buckle	7	Pouch Clip with back plate (3 posts)	6	TB Toggle Button	12
DR D-Ring	10	MPC Pouch Clip with back plate	6	TL Tri-Loop	8
D-Ring with Slot	10	(4 posts)		VPR Single Lock Viper Buckle	7
ET End Tab	9	RL Reducer Loop	8	WB Watch Band Buckle	6
Field Repair Items	4	SKR Side Kick Release Buckle,	5	WL Wheel Lock	13
GM Quick Release Buckle	6	Double Adjust		WSB/SL Hook	11
HDB Heavy Duty Double Bar Buckle	7	SB Standard Profile Slide	8	WSB Snap Body	11
HRL Curved High Release Lock Buckle	7	SB Low Profile Slide	8	ZP Zipper Pull	13
K Keeper	13	SB-W Wide Profile Slide	9		
LPM Medical Loop	8	SB-T Locking Teeth Slide	8		
LSR Side Release Buckle	5	SCC Shopping Cart Clip	10		
LSR Double Adjust Buckle	5	SD Strap Divider	12		



American Cord & Webbing Co., Inc.



Certified to
ISO 9001:2015



American Cord & Webbing Co., Inc.

88 Century Drive, Woonsocket, RI 02895-6161 | (401) 762-5500 | www.acw1.com

ACW Co., Inc. does not assume responsibility for defects, damages or injuries caused by misuse, abuse, repair by others or unsuitability as to applications or load bearing strength. Notwithstanding anything to the contrary in any information or promotional materials furnished by ACW, all sales of ACW are governed exclusively by its standard terms and conditions which include disclaimers of liability.